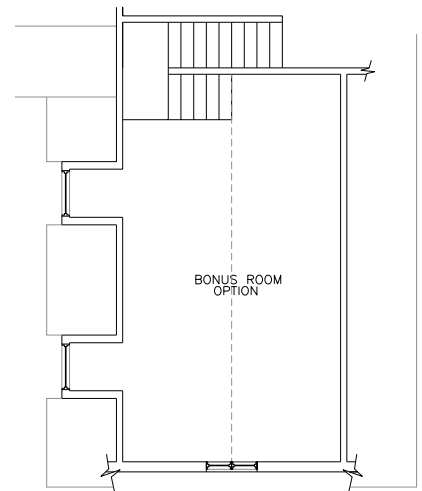
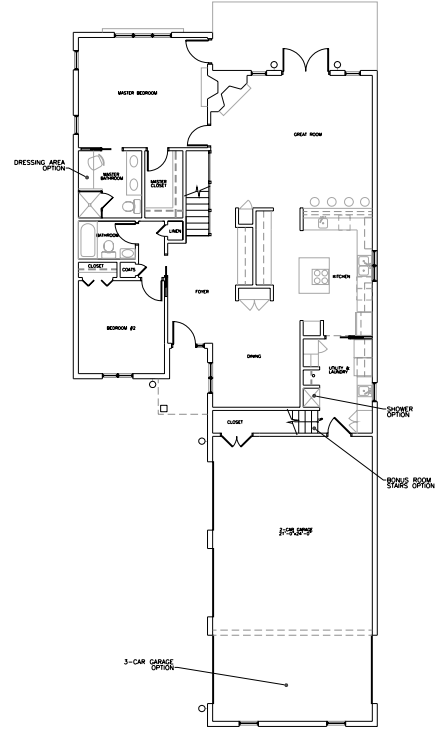
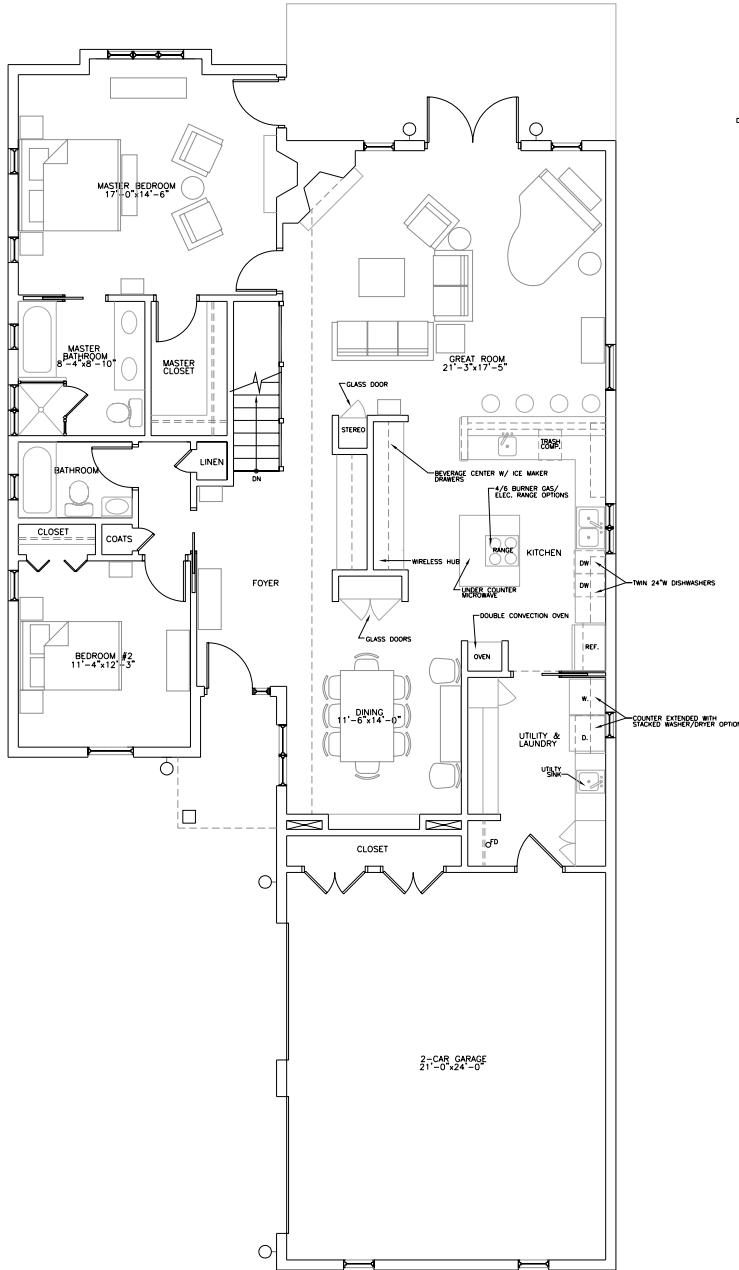


Greens of Ashland

PROPOSED RESIDENTIAL DEVELOPMENT • ST. JOSEPH, MISSOURI



PRELIMINARY
NOT FOR CONSTRUCTION, PERFORMING
FUNCTIONS OR IMPLEMENTATION

1865 SF

Goldberg, Sullivan & McCreery, Inc. is not responsible for construction, performing functions or implementation of this drawing.

Goldberg, Sullivan & McCreery, Inc. Architecture, Planning and Interiors

510 Francis St. - Suite 314
St. Joseph, MO 64501
816 233-9300
Fax: 816 233-9399 E-MAIL: info@ggo-pc.com

Sheet Number

Project:

Contractor:

Revisions:

PROJECT NO:
DATE: 12/06/05
DRAWN BY:
CHECKED BY:

Greens of Ashland
PROPOSED RESIDENTIAL DEVELOPMENT • ST. JOSEPH, MISSOURI

SHEET TITLE:

